

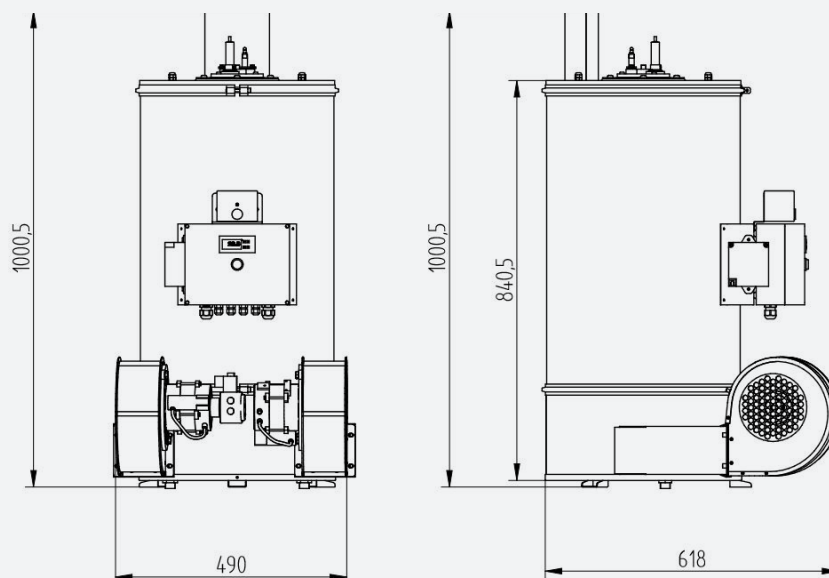
B-TEX VERTICAL GAS OIL DOUBLE VENTILATION BOILER

B-TEX is an innovative gas oil boiler for companies in need of a strong, solid, adaptable and durable product, with heat power and water flow much higher than the market's standards.

The coil is made with a 1/2" pipe, with a 60% volume more than the 3/8" pipes that are standardly used. This leads to less pressure losses in high flows and better heat exchanges performances.

The coil can be made with: standard carbon steel pipe for max 250bar pressure; SS thicker tube for max 400bar; stainless steel AISI 304 for food purposes or acid waters, max 250bar.

B-TEX boiler body, top and bottom covers are completely made in stainless steel to grant unmatched strength and durability. The coil's end is covered with a 4cm thick of refractory concrete.



B-TEX | VERTICAL GAS OIL DOUBLE VENTILATION BOILER

The boiler's conspicuity does not affect its management thanks to its peculiar structure: the design allows to remove cylinders and top covers to give access to the coil for cleaning and maintenance without removing the entire boiler.

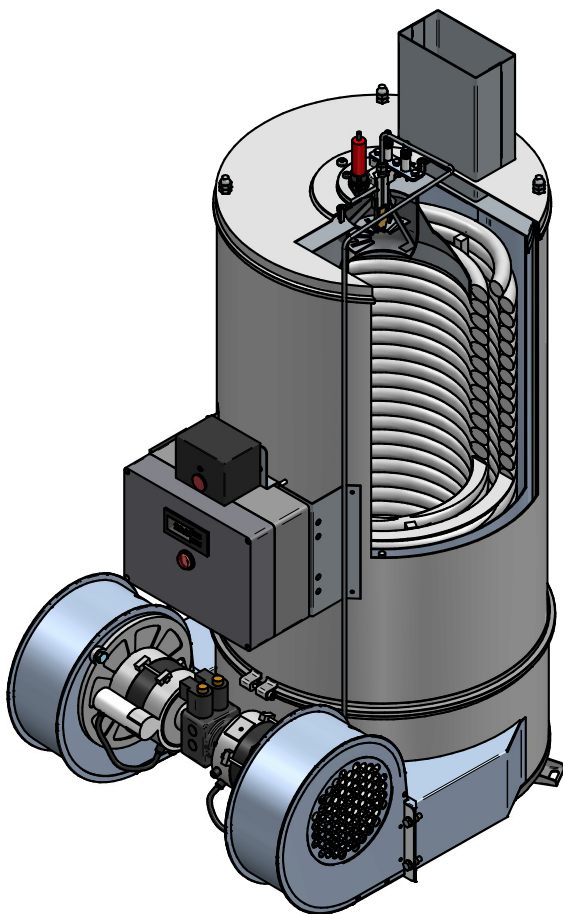
The double ventilation system allows to better reduce to zero the internal heat reverberation, saving useless working hours to the gas oil pump and improving reliability and resistance.

B-TEX has a peculiar gas oil pump with 2/2-Way Solenoid Valve that allows the modulation of starting heat capacity, improving performances even in difficult climate scenarios. This 20% modulation allows to limitate heat power and fuel wastage when needed, for example when only one pistol is used and the entire boiler power is not required.

The boiler is managed by an electronic flame control device that manage the starting times of both the boilers and the Solenoid Valves, and it is fit with a photo-resistance to control the acuta starts.

The control panel has a digital thermostat fit with probe by which it is possible to manage and visualize the maximum exit water heat and modify the heat detected by the probe. The panel is completed with a general on/off switch.

In the terminal box it only needs to connect the electric power and hydraulic safes (flow and pressure switch) to have a perfectly wired and safe boiler.



B-TEX	NOZZLE 2.50-3.00 US gal/h	NOZZLE 3.00-3.50 US gal/h
GAS OIL REACH	11,3-13,6 lt/h	13,6-15,8 lt/h
GAS OIL REACH	9,5-11,40 kg/h	11,40-13,00 kg/h
POWER	97-116.000 kcal	116.000-135.000 kcal
POWER	112 - 135 kW	135-150 kW
SUGGESTED WATER FLOW	Minimo 25 lt/min Massimo 35 lt/min	Minimo 30 lt/min Massimo 40 lt/min
MAX EXIT WATER HEAT	100 °C	100 °C
WEIGHT	118 kg	118 kg